

PRODUCT SHEET

SARS-CoV-2 Antigen Rapid Test Kit (Colloidal Gold Immunochromatography)



Product	LEPU MEDICAL SARS-CV-2 Antigen Rapid Test Kid (Kolloidale Gold-Immunochromatographie)
Article No.	cap-med-120
Packing Unit	25 pcs. Box (MOQ 100 Pcs. – 4 box)
Test Method	Antigen Rapid Test (nasal swab procedure)
Registration / Approval	2th September 2020, CE-InCG27 REV.06
EC/REP	Lepu Medical (Europe) Cooperatif u.A.
Limit of Detection (LOD)	2 x 10 ² TCID ₅₀ /ml (200 TCID ₅₀ /ml)
Sensitivity / Specificit	94.37% (97.32% for samples with Ct values ≤ 25) / 99.62%
Listing	Bundesinstitut für Arzneimittel und Medizinprodukte >> click here <<
Range of Application	Hospitals, Medical Practice, Nursing Homes
Sales Agent for	BIOCHEM Bernburg GmbH www.biochem-bernburg.de

CAPULUS assumes no guarantee / liability for topically, correctness and completeness of the information and data provided by the manufacturer. The product may differ from the above picture.

Contact / Order:

Phone: +49 40 307 772 15

E-Mail: info@capulus-medical.de

Request: Inquiry Form Business Customer

Internet: www.capulus-medical.com

Prodct Sheet Manufacturer >> click here <<


Declaration of Conformity >> click here <<

Clinical Validation Report on IVD-Reagents >> click here <<

Federal Gazette Announcement >> click here <<

The dispatch of goods / invoicing is carried out by BIOCHEM Bernburg GmbH, Neuer Weg 1 – 06406 Bernburg. BIOCHEM Bernburg GmbH certified according to ISO 13485.

OVERVIEW TEST




LEPU MEDICAL

SARS-CoV-2 Antigen Rapid Test Kit

(Colloidal Gold Immunochromatography)

- Non-invasive
- Simple to use
- Convenient, no devices required
- Rapid, get result in 15 minutes
- Stable, with high accuracy
- Inexpensive, cost-efficiency

**SARS-CoV-2
Antigen Rapid Test Kit**
(Colloidal Gold Immunochromatography)

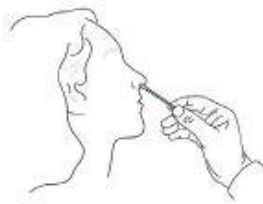


Hospital Test site Airport Station Hotel Corporation Mass Screening



EASY HANDLING

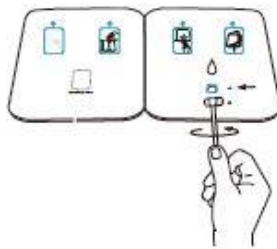
Instruction



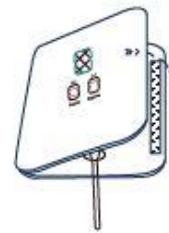
Step 1: Use swab to collect sample.



Step 2: Add 5 drops of buffer to well A.



Step 3: Insert the sample through well B to well A, rotate the shaft clockwise first and counterclockwise, twice each.



Step 4: Peel off the adhesive, fold the left side over, and wait for 15 minutes.

Result Interpretation

Positive

(+)



Negative

(-)



Invalid



LEPU MEDICAL TECHNOLOGY (BEIJING) CO., LTD

No.37 Chaoqian Rd., Changping District, Beijing, China

HANDLING IN COMPARISON

Booklet architecture minimizes staff exposure

Antigen Test Competitor



Antigen Test Competitor

