



[www.capulus-medical.de](http://www.capulus-medical.de)

## OUR RESPONSIBILITY FOR YOUR HEALTH



<b>Product</b>	LEPU MEDICAL SARS-CoV-2 Antigen Rapid Testkit (nasopharyngeal-swab)
<b>Article No.</b>	cap-med-121, 5 pcs. package (suitable for personal testing)
<b>Registration</b>	2th September 2020, CE-InCG27 REV.06
<b>Downloads/Listing</b>	BfArM, listing by EU Health Security Committee >> <a href="#">click here</a> << Product details >> <a href="#">click here</a> <<, Price list >> <a href="#">click here</a> <<
<b>Limit of Detection</b>	2 x 10 <sup>2</sup> TCID <sub>50</sub> /ml (200 TCID <sub>50</sub> /ml) (gold standard values)
<b>Sensitivity/Specificity</b>	94,37% (97,32% for samples with Ct-values ≤ 25), 99,62%
<b>Packaging Unit (VPE)</b>	5 pcs. each individually packed all in a box, 325 pcs. per carton

CAPULUS MEDICAL Services

Telefon + 49 40 307 772 15  
Fax + 49 40 414 870 25

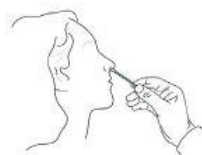
E-Mail [info@capulus-medical.de](mailto:info@capulus-medical.de)  
Internet [www.capulus-medical.de](http://www.capulus-medical.de)

Der Warenversand/-Abrechnung erfolgt über die BIOCHEM Bernburg GmbH (ISO 13485 zertifiziert), Neuer Weg 1, 06406 Bernburg.

## BENEFITS AT A GLANCE / OPERATIONAL MANUAL

- October 01, 2020 – BfArM listed and 100% refundable
- February 17th, 2021 – Official listing by EU Health Security Committee
- Recommended by Paul-Ehrlich-Institute
- Category gold-standard-values (LOD-value under 500), tests with a LOD-value up to 1200 are BfArM listed
- Very good sensitivity- / specificity values
- Easy handling in application (booklet-structure, minimizes the use of staff)
- Nasal swabs are only taken from the middle turbinate (more comfortable for patients)
- Larger nasal swab area for the inclusion of more virus- / bacterial mass
- Upon request, free training courses for your staff can be carried out by our specialists (only in Germany)

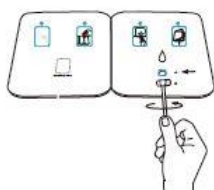
### Instruction



Step 1: Use swab to collect sample.



Step 2: Add 5 drops of buffer to well A.



Step 3: Insert the sample through well B to well A, rotate the shaft clockwise first and counterclockwise, twice each.



Step 4: Peel off the adhesive, fold the left side over, and wait for 15 minutes.

### Result Interpretation

**Positive**

(+)



**Negative**

(-)



**Invalid**



**LEPU MEDICAL TECHNOLOGY (BEIJING) CO., LTD**  
No.87 Chaoqian Rd., Changping District, Beijing, China

## MANUAL IN COMPARISON

Booklet-structure minimizes the use of staff

### Antigen Test Competitor



### Antigen Test Competitor

